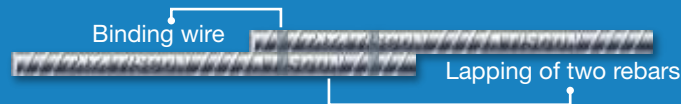


REIMAGINE
REINFORCEMENT WITH
COUPLERS



TISCON READYBUILD CUT AND BEND SERVICES WITH COUPLERS

Lapping of rebar is the most common method of reinforcing bar joints. Two bars are laid parallel to one another over a certain lap length and tied together with the help of a binding wire.



Problem with lapping practice

Additional length is required for lapping of rebars and the practice leads to an extra usage of rebar and increases congestion at lapping junctions when concrete is poured. The Binding process during lapping is labour intensive and time consuming.

AVOID LAPPING BY USING COUPLERS:

Couplers are hollow mechanical members. These are threaded inside and are screwed on to the two rebars to form a robust mechanical joint.

Tata Tiscon offers a wide range of mechanical couplers, which can be used along with Tiscon rebars.



COUPLERS

**CONFORMS TO IS 16172 AND MEETS DESIGN
REQUIREMENT OF IS 456**

AREA OF APPLICATION

- Wall to slab connection
- Beam to column connection
- Column-lap replacement
- Raft foundations
- Future extensions/additions
- Precast elements



WALL TO SLAB CONNECTION



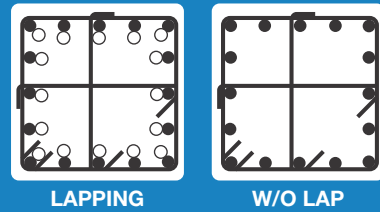
BEAM TO COLUMN CONNECTION

BENEFITS OF USING COUPLERS

AVAILABLE PAN INDIA THROUGH TATA STEEL'S NETWORK OF DISTRIBUTORS

REDUCE REBAR USAGE

- Avoid lapping and optimize rebar usage
- Avoid labour efforts and costs for lapping and binding



LAPPING

W/O LAP

REDUCE CONGESTION

- Allows optimum concrete binding and improves structural integrity
- Ideal steel ratio at structural member cross section

HIGHER STRUCTURAL INTEGRITY

- Rebar joints are less dependent on the concrete for load transfer

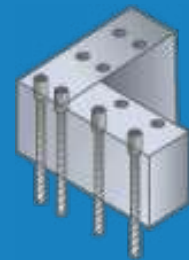


FASTER CONSTRUCTION

- Reduced handling and faster assembly ensures quicker installations

EASIER FUTURE INSTALLATIONS

- Can be installed as provisions for future installations
- Avoid the look of jutting out rebars and get a cleaner finish



BENEFIT OF USING COUPLER OVER LAPPING : COST SAVING

LAPPING COST					COUPLING COST			BENEFIT	
Diad	Wt of 1m Rebar	Lap in Lap in m @50d	Wt. of lap	Cost of Lap @Rs60/kg TMT	Both side Threading	Cost of coupler	Total	Benefit / Joint	Benefit / MT of TMT @ Joint Every 8m
mm	Kg	m	Kg	₹	₹	₹	₹	₹	₹
20	2.466	1	2.5	150	44	54	98	52	2,652
25	3.853	1.25	4.8	288	50	78	128	160	5,120
32	6.313	1.6	10.1	606	55	125	180	426	8,520

All price figs. are indicative only

? Did you know?

- Tata Tiscon Couplers are made from superior EN8D Steel
- Available in SKU 16mm - 40mm



Tata steel Limited || Tata Centre || 43 Jawaharlal Nehru Road || Kolkata 700071 || India

Mobile +91 9040079709, +91 7903530188

For further enquiry, please write to - akshat.kumar@tatasteel.com